

Flashbay Electronics
Building2, Jixun Industrial Park, Xinjiao, Dong'ao Village,
Shatian Town, Huiyang District, Huizhou City,
Guangdong Province, P.R. China

**DEKRA Testing and Certification (Shanghai)
Ltd., Guangzhou branch**
No.3, Qiyun Road, Huangpu District, Guangzhou,
Guangdong, China
Tel.: +86 20 6661 2000
Fax: +86 20 6661 2001


Contact
Devin Ai
Tel.: +86 20 6684 3294
E-Mail: devin.ai@dekra.com
Page 1 of 5

TEST REPORT

Test Report No. : **4380674.56** Version 1
Project No. : **4380674.00**
Test Report Date : **2021-09-27**

Job No. : 21-01802
Applicant : Flashbay Electronics
Building2, Jixun Industrial Park, Xinjiao, Dong'ao Village, Shatian Town,
Huiyang District, Huizhou City, Guangdong Province, P.R. China
Product Name : Water Bottles
Country of Destination : Nova Clear
Test Requested : 1. U.S. 21 CFR F.D.A. Regulation Part 177.1520 Clause 1.1a and 1.1b for polypropylene
2. U.S. F.D.A. Regulation 21 CFR Part 177.2600 rubber articles intended for repeated use, Section (e) and (f)
3. U.S. 21 CFR F.D.A. Regulation Part 177.1240 Clause e for 1,4-Cyclohexylene dimethylene terephthalate and 1,4-cyclohexylene dimethylene isophthalate copolymer
Test Method : Please refer to next pages
Sample Received : 2021-09-13
Testing Period : 2021-09-13 to 2021-09-23
Test Results
- following pages -

Resume:

| No. | Parameter | Product Name: Water Bottles Model No.: Nova Clear |
|-----|--|--|
| | |  |
| 1. | Test for F.D.A. Regulation on polypropylene 21 CFR 177.1520 | PASS |
| 2. | Test for F.D.A. Regulation on Rubber 21 CFR Part 177.2600 | PASS |
| 3. | Test for F.D.A. Regulation on 1,4-Cyclohexylene dimethylene terephthalate and 1,4-cyclohexylene dimethylene isophthalate copolymer 21 CFR Part 177.1240 | PASS |

Guangzhou, September 27, 2021

Signed for and on behalf of

DEKRA Testing and Certification (Shanghai) Ltd., Guangzhou branch

Chemical & Mechanical



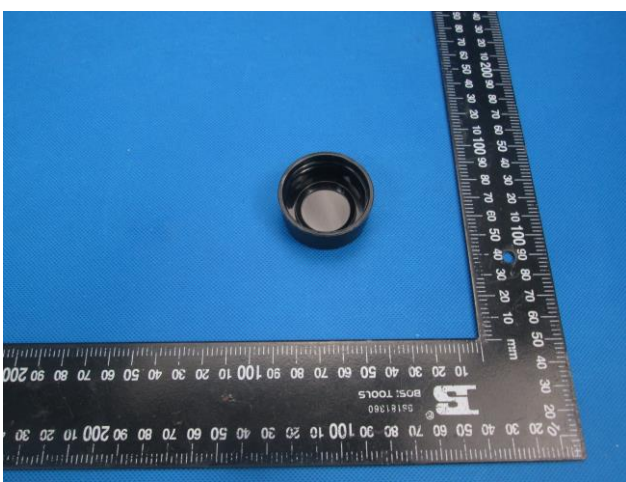
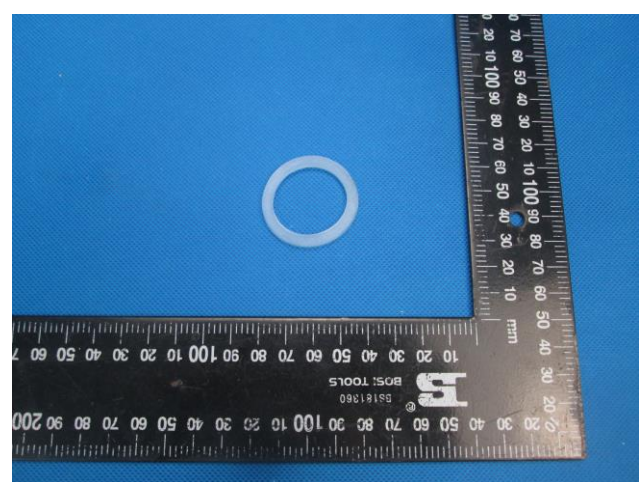

Devin Ai

Approved Signatory

Attention: Please note that every statement made in this report is only valid for the samples tested and reported herein. This report shall not be reproduced except in full, without the written approval of the testing laboratory. Only the report with CMA logo has the function of social proof in China market.

Sample Descriptions:

| No. | Description(s) | Material(s) (claimed by applicant) |
|-----|----------------|------------------------------------|
| (1) | Lid | PP (Black) |
| (2) | Washer | Silicone (Transparent) |
| (3) | Bottle | Tritan (Transparent) |

Sample photos*Picture (1), Lid**Picture (2), Washer**Picture (3), Bottle*

(Blank)

TEST RESULTS

1. U.S. 21 CFR F.D.A. Regulation Part 177.1520 Clause 1.1a and 1.1b for polypropylene

With reference to the U.S. Food and Drug Administration 21 CFR Part 177.1520 Clause 1.1a and 1.1b.

| Parameter | | Result | MDL | Limit |
|-----------|---|--------|-----|----------------------------------|
| | | (1) | | |
| a) | Density | 0.907 | -- | 0.880-0.913 |
| b) | Melting Point (°C) | 172.9 | -- | 160-180 (1.1a) 150-180 (1.1b) |
| c) | Maximum extractable fraction in n-hexane, % (w/w) | <0.5 | 0.5 | 6.4 |
| d) | Maximum extractable fraction in xylene, % (w/w) | 0.79 | 0.5 | 9.8 |

Remark:

1. % = Percentage
2. MDL = Method Detection Limit

2. U.S. F.D.A. Regulation 21 CFR Part 177.2600 rubber articles intended for repeated use, Section (e) and (f)

With reference to the U.S. Food and Drug Administration 21 CFR Part 177.2600 - rubber articles intended for repeated use, Section (e) and (f).

| Parameter | | Test condition | Result (mg/in ²) | MDL (mg/in ²) | Limit (mg/in ²) |
|-----------|-------------------------------|--|------------------------------|---------------------------|-----------------------------|
| | | | (2) | | |
| (a) | Total extractives in water | Reflux temperature, first 7 hours | 0.20 | 0.20 | 20 |
| | | Reflux temperature, succeeding 2 hours | <0.20 | 0.20 | 1 |
| (b) | Total extractives in n-hexane | Reflux temperature, first 7 hours | 3.73 | 0.20 | 175 |
| | | Reflux temperature, succeeding 2 hours | <0.20 | 0.20 | 4 |

Remark:

1. mg/in² = Milligram per square inch

3. U.S. 21 CFR F.D.A. Regulation Part 177.1240 Clause e for 1,4-Cyclohexylene dimethylene terephthalate and 1,4-cyclohexylene dimethylene isophthalate copolymer

With reference to the U.S. Food and Drug Administration 21 CFR Part 177.1240 clause e.

| Parameter | Test condition | Result (%) | Limit (%) |
|-------------------|--|------------|-----------|
| | | (3) | |
| Total extractives | Distilled water, Reflux temperature 2 hours | <0.05 | 0.05 |
| | Ethyl acetate, Reflux temperature 6 hours | 0.09 | 0.7 |
| | n- heptane, Reflux temperature 2 hours | <0.05 | 0.05 |

Remark:

1. % = Percentage

---End of Report---